



## **SERIES VR725**

### **Advanced Technology Logging & Archiving System**

#### SPECIFICATIONS

##### Hardware

- Digital Non-Proprietary Platform
- Standalone - w/Monitor, Keyboard & Mouse
- Standalone - w/ Optional Built In Color Touch Screen Controller ( Pictured Above )
- Network Server - Multiple Remote PCs Control
- Rack Mount
- Desktop
- Modular For Fast Simple Upgrades
- Internal Hard Disks - Multiple (Option for "Hot Swap")
- Archive Drives - Multiple
- O/S - Linux Operating From Flash Memory
- USB Connectors
- Speakers w/Headphone Jack
- Re-record/Line Out Jack

##### Record Channels

- 8 to 96 Analog
- 8 to 96 Digital Sets
- 1 to 8 Digital T1,E1 or ISDN PRI Circuits

##### Audio Compression Rates

- 13kb/s
- 16kb/s
- 32kb/s
- 64kb/s

##### Record Activation Selectable Per Channel

- VOX
- Hook Detect
- Continuous
- External

## Record Connectivity

Analog - Telephone, Radio, Microphones Etc.  
Digital Telephone Stations For Most PBX's.  
Digital Telephone T1/E1/ISDN PRI Direct Interface

## Archive Drives

9.4GB DVD-RAM  
Removable 250GB Hard Disks

## Archive Media Capacity

9.4GB DVD-RAM - @13kb/s = 1,540 Channel Hours  
250GB Removable Hard Disk - @13kb/s = 41,250 Channel Hours

## Standard On Line Hard Disks - Mirrored RAID 1 - Optional Hot Swappable

250GB - @13Kbs = 41,250 Channel Hours  
Option for 4 X 250GB RAID 5

## Power Supplies

Dual - Hot Swappable

## Local System Access

Eventide Touch Screen Controller or Keyboard/Monitor/Mouse

## Remote System Access

Unlimited Number Network Connected Workstations with Eventide Call Browsers Installed.  
Up to 16 Simultaneous System Accesses  
Multi-channel Live Monitor Up to 8 Channels Simultaneously  
Multi-channel Play w/Talking Time/Date Up to 8 Channels Simultaneously  
Drag & Drop, and Email Recordings  
Call Record Database Queries  
Multi - System Manager  
Desktop Instant Recall at Attached PC Workstations

## Database

Powerful Relational Database for All Call Records

## Search Parameters

Time/Date  
CLID Phone Number  
Dialed Phone Number  
ANI Phone Number  
Channel Name  
Call Tag  
Call Duration  
Incident Name  
ALI Data

## Security

User ID/Password to the Channel Level

## Network Connectivity

Ethernet: 10/100/1000 Mbps

NICs: 1

Protocol: TCP/IP

## Physical

Height: 5.2 Inches (3U)

Width: 19 Inches

Depth: 22 Inches

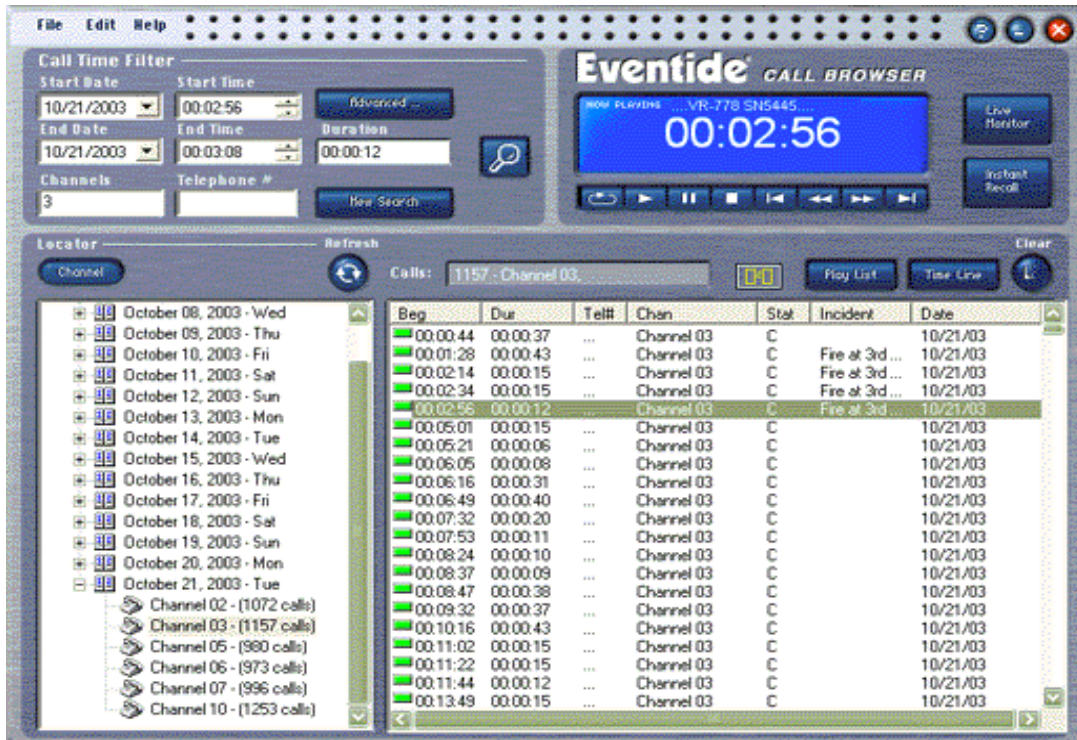
Weight: 40 to 60 Pounds

## Power Requirements

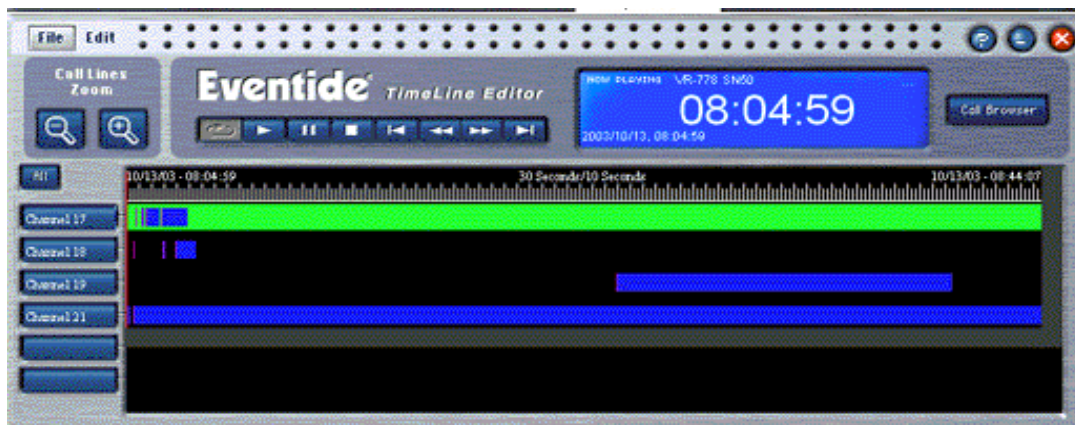
100 to 240 VAC 50 to 60 Hz

350 Watts max

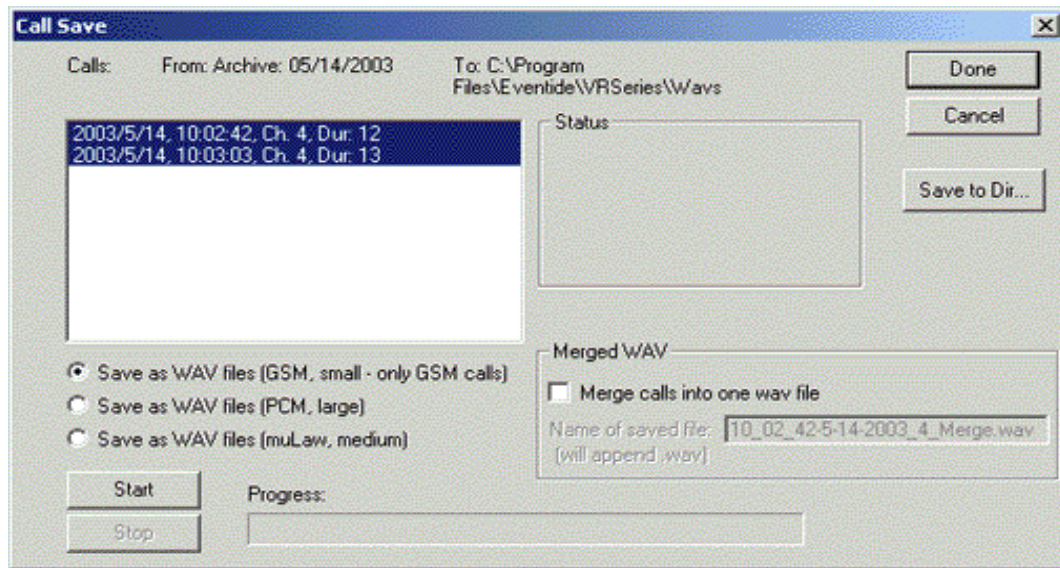
# Sample Eventide VR Series Client Call Browser Screens



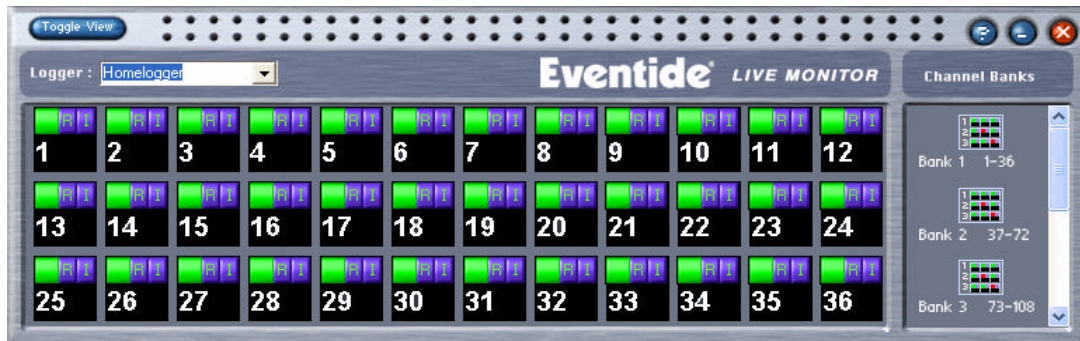
CALL BROWSER



TIME LINE EDITOR



CALL SAVE AS WAV FILES



LIVE MONITOR