

# VR778 Advanced Technology Logging and Archiving System



## MISSION-CRITICAL RELIABILITY, MISSION-ENHANCING HARDWARE AND SOFTWARE

Eventide invented the digital communications recorder in 1989. With thousands of communications recorders currently in service in such diverse applications as NORAD, nuclear submarines, NASA, maximum security prisons, air traffic control, and emergency call centers throughout the world, Eventide continues its tradition of combining unmatched ease-of-use with mission-critical reliability. The purpose-built VR778 digital voice recorder offers unmatched ease-of-use with front panel operation, or with MediaWorks™, Eventide's full-featured Windows client. The VR778, the highest channel-density Eventide communications recorder, features an embedded Linux operating system for maximum reliability while maintaining seamless compatibility with your existing Windows infrastructure.

## CONTROL FROM THE FRONT PANEL, ACCESS FROM THE NETWORK AND VICE VERSA!

Control the VR778 recorder from the optional front panel using the big, bright 320x240 color TFT display, or simply plug in a monitor, keyboard and mouse. Monitor and play back right at the recorder! Using our full-featured MediaWorks client, up to 32 simultaneous users can recall, monitor, and play back at any Windows networked PC.

## SCALABILITY AND FLEXIBILITY ARE ENGINEERED-IN

We know that your needs can change, so we have designed the VR778 to accommodate a wide variety of interfaces. Analog recording channels are expandable from 8 to 192 channels; digital PBX channels from 8

to 192; up to 96 ISDN BRI channels; 24 to 240 T1, E1 or ISDN PRI circuits, and 8 to 128 VoIP telephones. What's more, you can mix analog, digital PBX/telephone circuits and VoIP channels in the same unit. On/off-hook, VOX, and continuous record activation are all selectable on a per-channel basis, as are beep tones and automatic gain control (AGC). The VR778 also supports DTMF and CLID telephone number detection. Compression rates of 13kb/s GSM, ADPCM 16kb/s, 32kb/s, or Mu-Law 64kb/s are selectable for each group of channels. Configuration is programmable - no tricky hardware adjustments necessary!

## FAULT TOLERANT STORAGE FOR MONTHS (OR YEARS!)

Fully redundant RAID-1 dual mirrored 250GB hard drives are standard, yielding 41,250 channel hours of recording at 13.3kb/s. Optional 400GB hard drives yield 66,000 channel hours. RAID-5 option provides up to 2TB of storage or over 36 channel years of recording. For archiving, dual 9.4GB DVD-RAM multi-drives are standard which hold 1,540 channel hours of audio each. Dual hot-swap power supplies are standard.

## FEATURE-RICH PC CLIENT

The MediaWorks client provides access from an unlimited number of standard PC workstations running Windows, and up to 32 workstations can access the VR778 simultaneously. Multiple VR778s can be operational on a single network without interfering with your existing network or servers. MediaWorks is a self-installing and self-contained, scalable client that requires minimal system resources, yet provides access to the call record database and recorder from an unlimited number of PC workstations.

## COMPREHENSIVE USER FEATURES

All call records are stored in a state-of-the-art

relational database. MediaWorks client search features include filtering by channel name, time/date, duration, dialed number, DTMF, Caller ID, call direction, ANI/ALI data or call tag. Up to all installed channels of playback or live monitoring are available simultaneously via MediaWorks. You can create PC-compatible WAV files of single calls or all calls that comprise an incident.

## MULTIPLE USER ID/PASSWORD SECURITY

The system administrator can create multiple user profiles to allow permissions to be managed down to the channel level using password and user ID security.

## CHOOSE EVENTIDE

For over 36 years, Eventide has built a reputation for technological innovation and time-tested reliability. Thousands of customers worldwide have come to depend on Eventide for mission-critical operations. For more information about the VR778, call Eventide at 201-641-1200 or visit:

**WWW.EVENTIDE.COM**

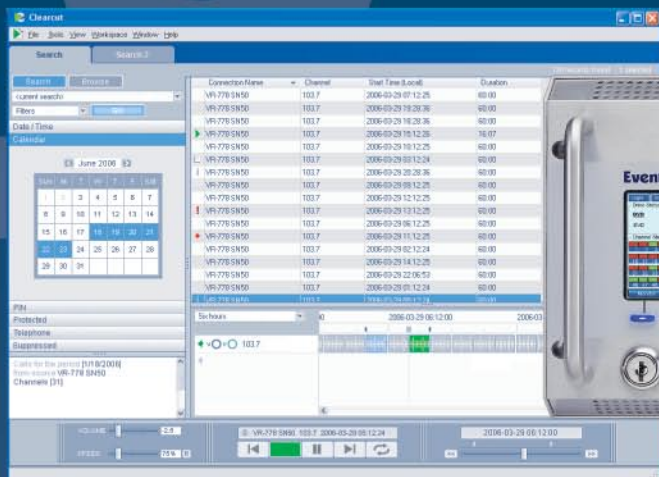


MediaWorks™ PC Interface

# Eventide®

Communications Division  
One Alsan Way, Little Ferry, NJ 07643, USA  
[www.eventide.com](http://www.eventide.com) [loggers@eventide.com](mailto:loggers@eventide.com)  
tel: 201.641.1200 fax: 201.641.1640

# VR778 Advanced Technology Logging and Archiving System



MediaWorks™ PC Interface



## FEATURES

**NONPROPRIETARY RECORDING PLATFORM FEATURING EMBEDDED LINUX O/S FOR INCREASED RELIABILITY AND A MORE COST-EFFECTIVE SYSTEM**

**TRUNKED RADIO, VOIP, T1, E1, ISDN, AND DIGITAL PBX SUPPORT**

**FIELD UPGRADABLE FROM 8 TO 192 CHANNELS**

**CHOICE OF ARCHIVE DRIVES AND METHODS**

**STANDARD DUAL 250GB RAID-1 HARD DRIVES, OPTIONAL 400GB HARD DRIVES, RAID-5, OR HOT-SWAP HARD DRIVE ARRAY**

**STANDARD DUAL HOT-SWAP POWER SUPPLIES**

**MIX ANALOG AND DIGITAL CHANNELS IN SAME SYSTEM**

**DIAL-IN REMOTE DIAGNOSTICS**

**VARIABLE SPEED PLAYBACK, FAST FORWARD/REWIND**

**INPUT CARDS DETECT DTMF AND CLID FOR INCLUSION INTO CALL RECORDS DATABASE**

**PROGRAMMABLE ARCHIVE PROTECTION PREVENTS PREVIOUSLY RECORDED MEDIA BEING RECORDED OVER OR REFORMATTED**

## SPECIFICATIONS

### STANDARD LOCAL CONTROL

Monitor, keyboard, mouse, volume control with built-in speaker, drive status LEDs, re-record and headset jacks, key lock for power on/off

### OPTIONAL FRONT PANEL

320X240 Color TFT LCD Screen  
4 backlit soft keys, 4 backlit fixed keys, scroll wheel with click, keypad with 15 backlit keys, drive status LEDs, re-record and headset jacks, key lock for power on/off

### REMOTE WINDOW PROGRAMS

MediaWorks™, MediaAgent™, MediaCoach™

### CHANNEL CAPACITY PER UNIT

Analog – 8 to 192  
Digital Stations – 8 to 192  
T1/E1/PRI – 24 to 240  
VoIP – 8 to 128

### ON-LINE RECORDING STORAGE

Standard dual mirrored 250GB RAID-1 yields 41,200 channel hours.  
Optional 400GB (yields 66,000 channel hours) or RAID-5 (yields 198,000 channel hours)

### SYSTEM PLATFORM

Digital nonproprietary recording appliance

### OPERATING SYSTEM

Embedded Linux

### ARCHIVE RECORDING

9.4GB DVD-RAM 1,540 Hours  
USB drive for back up/restore  
Remote recording  
Any NAS, SAN or VR recorder  
250GB removable hard drives  
41,200 channel hours

### CALL RECORD DATABASE

Relational database of all call records with programmable retention

### PLAYBACK SEARCH PARAMETERS

Channel name, time/date, call duration, call direction, dialed number, caller ID number, call record filtering, channel number

### PLAYBACK

Live monitor, simultaneous record/play, local speaker, remote PC, continuous, looped, variable speed, fast forward, and rewind

### SECURITY

Multiple user profiles control permissions down to the channel level

### CHANNEL INPUTS

Compression rates: 13kbs GSM, ADPCM 16kbs, 32kbs or 64kbs  
Mu-law  
Frequency Response: 200 to 3400Hz  
Signal-to-Noise: -50dB  
Crosstalk: -60dB  
AGC: 24dB boost  
Impedance: 10kOhm  
Record Activation: VOX, off-hook, continuous, external

### ANALOG INTERFACES

Analog telephone, 2-way radio, telephone trunks, stations, handsets, headsets, microphones, speaker-phones, etc.  
Beep Tone – selectable on a per-channel basis

### DIGITAL INTERFACES

T1/E1/PCM30, ISDN PRI & BRI, VoIP telephones, trunked radio, and digital telephone stations

### NETWORK

Ethernet 10/100/1000Mbps, TCP/IP protocol, Windows-based control client, up to 32 simultaneous accesses, with desktop Instant Recall

### STANDARD FAULT-TOLERANT FEATURES

Dual hot-swap power supplies and fans, mirrored hard drives, dial-out alarm, dial-in remote diagnostics

### DIMENSIONS

7" H x 19" W x 26" D  
Weight 55 to 95 pounds

Specifications subject to change without notice or obligation.

Eventide is a registered trademark of Eventide and MediaWorks, MediaAgent, MediaCoach are trademarks of Eventide Inc.

All other trademarks are the property of their respective owners.

©2007 Eventide Inc.

# Eventide®

Communications Division

One Alsan Way, Little Ferry, NJ 07643, USA

[www.eventide.com](http://www.eventide.com) [loggers@eventide.com](mailto:loggers@eventide.com)

tel: 201.641.1200 fax: 201.641.1640

DEALER STAMP